

The PACE/SkillPROOF IT INDEX REPORT

NEW YORK COUNTY (MANHATTAN) REPORT
APRIL 2010



Business Retooling for Post-recession Economy



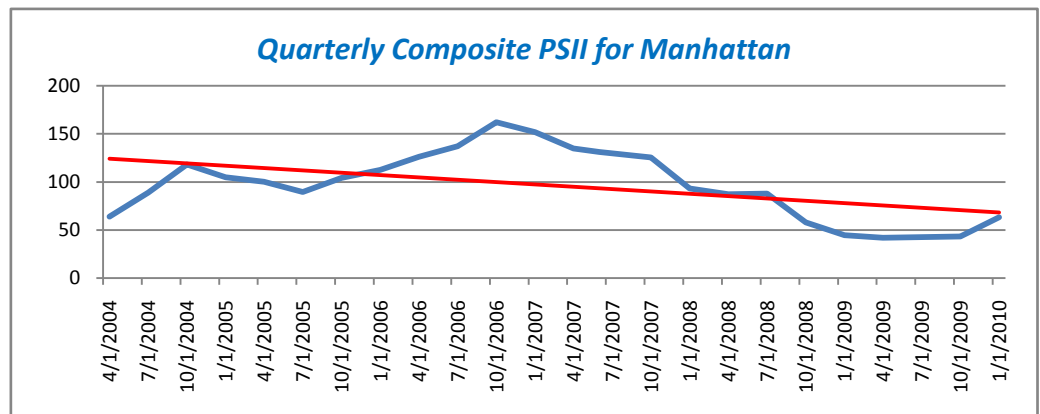
“Business and consumer confidence, market activity, and job creation all increased during the 1st quarter. This improved outlook is prompting businesses to gear up and develop new strategies to make themselves more responsive to market changes, and client and shareholder needs with better reporting and information.

“The improved economy also has a direct impact on hiring as the year of retooling has begun. Social media, collaboration, and cloud computing are driving the dissemination of information at ever increasing speeds. This will result in increased demand for network administrators, database architects, and those with knowledge of Web 2.0/3.0 and strong collaboration skills in order to generate better information for better decision-making.”

-- Kamal Shah
Vice President
Openheimer Funds

Manhattan IT Job Market Remains Robust

The dynamic IT industry was one of the leaders in a promising turnaround by an economy that continued to show signs of strength during the 1st quarter of the new year. The 1st quarter Pace/SkillPROOF IT Index (PSII) of job openings in Manhattan jumped by 11 points, or over 18 percent, from 63 to 74. This level has not been seen since the 2nd quarter of 2008, when the Great Recession began. This went hand in hand with nationwide gains in hard-hit sectors like manufacturing and construction, as well as with the 162,000 increase in employment reported in March.



For complete data and analysis, go to [Historic Behavior of IT Job Categories](#).

From the Occupational Outlook Handbook, 2010-11 Edition www.bls.gov

“Among **computer and information systems managers**, job growth is expected to be the fastest in computer systems design establishments; software publishing firms; data processing and hosting companies; management, scientific, and technical consulting services; and health care organizations.

“**Job prospects.** Prospects for qualified computer and information systems managers should be excellent. Workers with specialized technical knowledge and strong communications and business skills, as well as those with [knowledge of] information systems, will have the best prospects. Job openings will be the result of employment growth and the need to replace workers who retire or leave the field.”

Projections Data from the National Employment Matrix

Occupational Title	SOC Code	Employment, 2008	Projected Employment, 2018	Change	
				Number	Percent
Computer and information systems managers	11-3021	293,000	342,500	49,500	17

EARLY BAROMETER: WHAT THE INDEX TRACKS

The Pace/SkillPROOF IT Index tracks job openings in New York County (Manhattan) and in a separate report, Westchester County, NY. Both use data obtained by SkillPROOF, Inc, based on a selection of 130 blue chip companies from a cross section of major US industries. Their names are proprietary, but all post openings for jobs in the New York area and automatically update job openings on their Web sites. Regional extrapolations are based on a formula derived from BLS data and other calculations. For more information see www.skillproof.com. The Pace Index is calculated in three formats: the weighted average of the job postings as a snapshot of the IT job market, and year-to-year and month-to-month changes in major categories as diffusion indexes. For more information about the methodology visit the PSII Web site at <http://www.pace.edu/psii>.

The PACE/SkillPROOF IT INDEX REPORT

Quarterly Quote

“Blaming speculators as a response to financial crisis goes back at least to the Greeks. It's almost always the wrong response.”

*Larry Summers
Former US Secretary of the Treasury*

SEIDENBERG TO HONOR JAY DWECK OF MORGAN STANLEY



The Seidenberg School will honor **Jay S. Dweck**, Managing Director and Global Head of Strategies and Modeling at Morgan Stanley at this year's **Leadership and Service in Technology Award Reception**. This event, an annual gathering that includes professionals from the IT community, is the school's primary fundraiser with proceeds going towards student scholarships and new initiatives.

Consider yourself invited.

Date: Wednesday, June 9, 2010

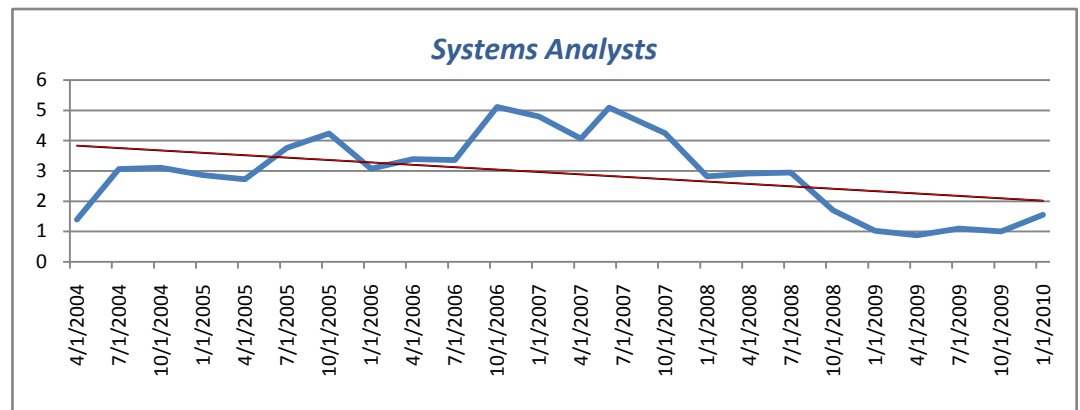
Place: PricewaterhouseCoopers
300 Madison Avenue
New York, NY

Time: 6:00 pm

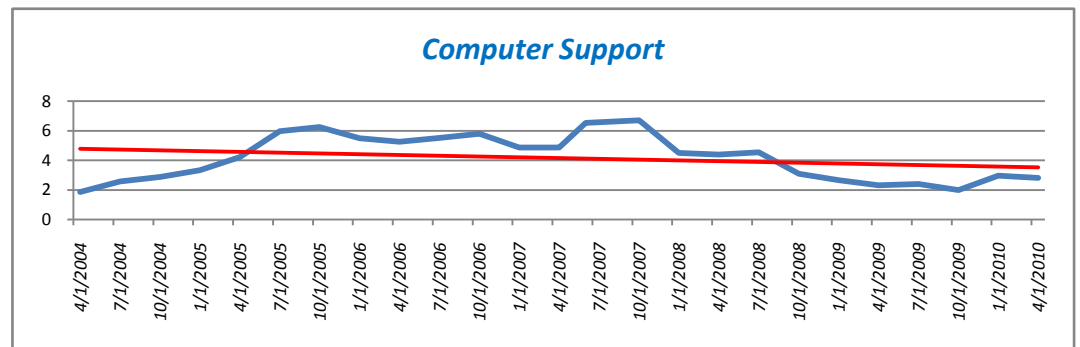
For additional information and to register, go to [Learn More](#).

1st Quarter Analysis

The dramatic growth of the IT industry in Manhattan is a significant sign of overall economic recovery. All indicators point to this reversal. Consumer spending and confidence are up, as is the hotel occupancy rate. As pointed out in last quarter's PSII, employment is a lagging indicator. Employers are always cautious in responding to improved market signs as they want to be sure that the recovery is secure before hiring. That sense of confidence was reached this quarter. The overall 18 percent growth of the PSII was led by a 60 percent increase in demand for **Systems Analysts**, followed by a greater than 30 percent increase for **Computer Programmers**. **Other Computer Specialists** was also up by over 24 percent, a further indication of recovery.



Although nine of the 11 IT job market categories showed positive gains, the news was less promising for the remaining two. Demand for **Computer Support** professionals declined by nearly one percent and that for **Database Administrators** by over half of one percent.



CONTACT INFORMATION

Sponsor and Project Oversight: **Constance A. Knapp**, PhD, Interim Dean, Seidenberg School of Computer Science and Information Systems
Modeling and Economic Analysis: **Farrokh Z. Hormozi**, PhD, Chair, Department of Public Administration, Dyson College of Arts and Sciences.
Data provided by: **Henning C. Seip**, SkillPROOF, Inc. www.skillproof.com
Editor: **Louise P. Kleinbaum**, Assistant Dean and Director of Communications, Seidenberg School of Computer Science and Information Systems
Consulting Editor: **Christopher T. Cory**, Pace University Executive Director of Public Information
Web Developer: **Peter Cronin**, MS

For comments, clarification or additional information, please e-mail ITindexinfo@seidenberg.pace.edu
To learn more about Pace's Seidenberg School, visit www.seidenberg.pace.edu