

# The PACE/SkillPROOF IT INDEX REPORT

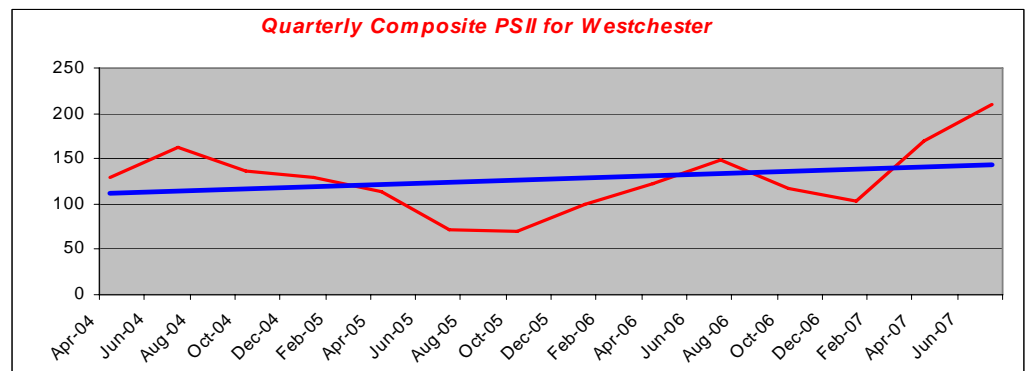
WESTCHESTER COUNTY EDITION  
JULY 2007

## *IT Job Market in Westchester Continues to Show Strength Demand for Computer Scientists Soars*

The Pace/SkillPROOF IT Job Index (PSII) for Westchester County, New York registered 178 at the end of the 2<sup>nd</sup> quarter of 2007. This is significantly higher than the 137 for the 1<sup>st</sup> quarter of the year.\* The increase is particularly impressive in that demand for workers other than IT professionals is soft.

Substantial growth in the 2<sup>nd</sup> quarter also is noteworthy because the overall trend in the IT job market in Westchester County was down in 2006. After more than two consecutive quarters of decline last year, the job market started showing significant improvement in 2007, as depicted in the graph below.

Led by the demand for Computer Scientists, most of the 11 tracked categories had increased postings. The Yearly and Quarterly Diffusion Indexes, the ratio of the number of categories with higher postings over the previous period, registered better than 73, or 55%. Of the 11 categories the SkillPROOF, Inc. follows, eight showed greater demand over the previous year, and six posted increased demand over the 1<sup>st</sup> quarter.



For the complete data and analysis, go to [Historic Behavior of IT Job Categories](#).

**\*The base of this calculation became more robust as of the 1<sup>st</sup> quarter with the inclusion of 2006 data.**

## *Pace/SkillPROOF Partnership Receives IBM Faculty Award*

Susan M. Merritt, dean of Pace University's Seidenberg School of Computer Science and Information Systems, recently received a Faculty Award from IBM. The award will enable Pace University and SkillPROOF, Inc. to expand their research into other job markets and locations.

The IBM Faculty Award also comes with technology support from IBM's T. J. Watson Research Center. It will encourage SkillPROOF, Inc. to assume a leadership role in applying technologies such as deep Web mining and Natural Language Processing (NLP) to labor market research.

"We need to find and research the job requirement trends of employers locally and nationwide to offer a better understanding of their needs, and to help support career planning and decision making of students and professionals," said Henning Seip, President of SkillPROOF, Inc. "IBM's cutting edge NLP technology will help us analyze job descriptions on a large scale and find answers about the future of the job market." [\[read entire press release\]](#)

## Reclaiming IT Global Leadership



*"Outsourcing to India or China is considered a looming threat to IT graduates whose once unique skills fueled the U.S. economy. But outsourcing is just a sidebar when viewed in the overall context of economic change and business innovation. More important are the vast number of new opportunities being opened by information technology today.*

*"This is the view of an optimistic contrarian who believes that we are well positioned to reclaim global IT leadership."*

--Naomi Seligman  
Co-chair,  
CIO Strategy Exchange  
and  
Senior Partner,  
Ostriker von Simson, Inc.

## EARLY BAROMETER: WHAT THE INDEXES TRACK

The Pace/SkillPROOF IT Indexes comprehensively track job openings in New York County (Manhattan) and Westchester County, NY. Both use data obtained by SkillPROOF, Inc. The Pace Index is calculated in three formats: the weighted average of the job postings as a snapshot of the IT job market, and year-to-year and quarter-to-quarter changes in major categories of the IT job market as diffusion indexes. For more information about the methodology visit the PSII Web site at <http://www.pace.edu/psii>.

# The PACE/SkillPROOF IT INDEX REPORT

## Quote of the Month

*“The real problem is not whether machines think but whether men do.”*

-- B. F. Skinner  
Psychologist

### Second Quarter Analysis

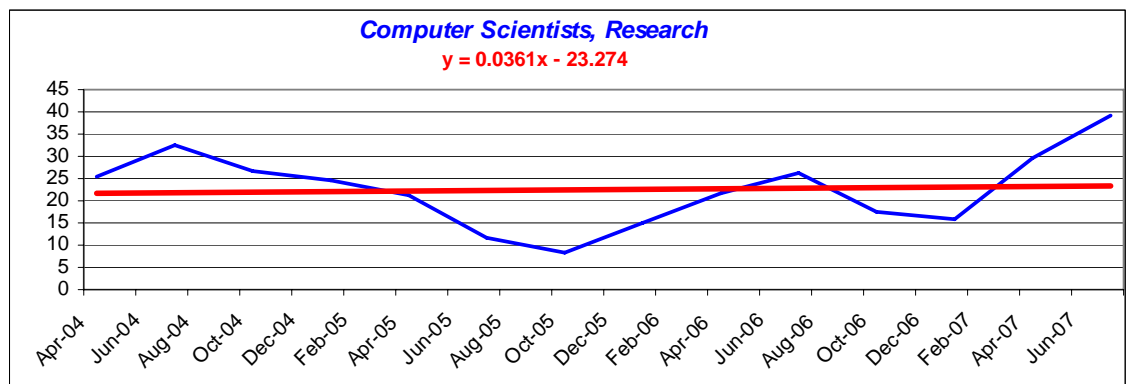
According to the overall trend estimate of the 11 tracked categories, the year-to-date growth of more than 55 percent in the IT job market in Westchester County is a positive indicator of its dynamic nature. Although the overall trend is slow, the 2<sup>nd</sup> quarter demonstrated substantial growth. Of the 11 categories tracked by SkillPROOF, Inc. in the 2<sup>nd</sup> quarter of this year, only three showed no change or decline in demand, and similar numbers indicated weaker demand the year before. Although demand for Computer Scientists overshadowed that in all other categories for the second consecutive quarter, demand for Network Administrators and Software Engineers was also strong. A reversal of the downward trend in other categories is expected later in the year based on the growth of the IT job market in 2007.



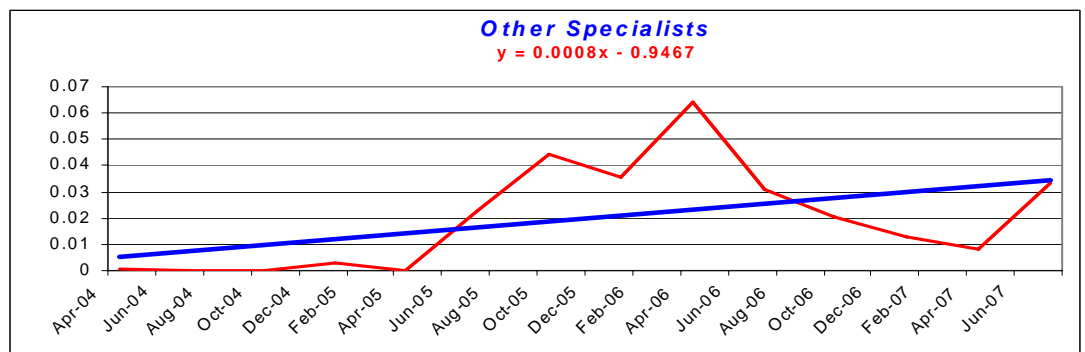
Keep up with the IT Job Market: visit [www.skillproof.com](http://www.skillproof.com)

To follow regional IT job markets more closely, visit [www.skillproof.com](http://www.skillproof.com).

SkillPROOF's monthly IT Job Market Report provides information and analysis about trends relating to the skills and occupations increasing in demand in the major high-tech areas of the U.S. including New York City and Silicon Valley.



On the other hand, the rebound in Other Specialists, as shown in the graph below is impressive, and points to the varied nature of the IT job market in the county.



## CONTACT INFORMATION

For comments, clarification or additional information, please e-mail [ITindexinfo@seidenberg.pace.edu](mailto:ITindexinfo@seidenberg.pace.edu)  
To learn more about Pace's Seidenberg School, visit [www.seidenberg.pace.edu](http://www.seidenberg.pace.edu)

Sponsor and Project Oversight: Susan M. Merritt, PhD, Dean, Seidenberg School of Computer Science and Information Systems  
Modeling and Economic Analysis: Farrokh Z. Hormozi, PhD, Department of Public Administration  
Data Provided by: Henning C. Seip, SkillPROOF, Inc.  
Editor: Christopher T. Cory  
Production Editor: Louise P. Kleinbaum  
Web Designer: Seung-Seok Choi